

How to configure OnSync with a Bluetooth Mobile
(Tested on Motorola A835, V525, V600, Nokia 6310i, Sony Ericsson T68, T68i, Siemens)

(updated in May 2005)

WARNING:
THIS MANUAL IS FOR Mac OS X 10.3 (PANTHER) OR 10.2 (JAGUAR)
FOR 10.4 (TIGER) LOOK AT THE CORRESPONDING MANUAL

Intro

This little tutorial shows how it is possible to configure your Mac to use a Bluetooth phone with OnSync.

You can follow the steps described in this document for all mobile device models. The pictures presented in this tutorial are referred to a Motorola A835, but the configuration process for other models should be similar to the one described here.

Let me know if you have troubles with this configuration or if you follow different steps to configure your mobile, so i'll try to update this tutorial.

The pictures present in this tutorial should be a little different from what you see on your Mac, it depends on your installed Mac OS X version (Panther or Jaguar).

If my english is not clear feel free to send me some corrections

Really many thanks to Anna Robinson for helping me in finding a solution for Motorola mobiles.

Your Mobile Configuration:

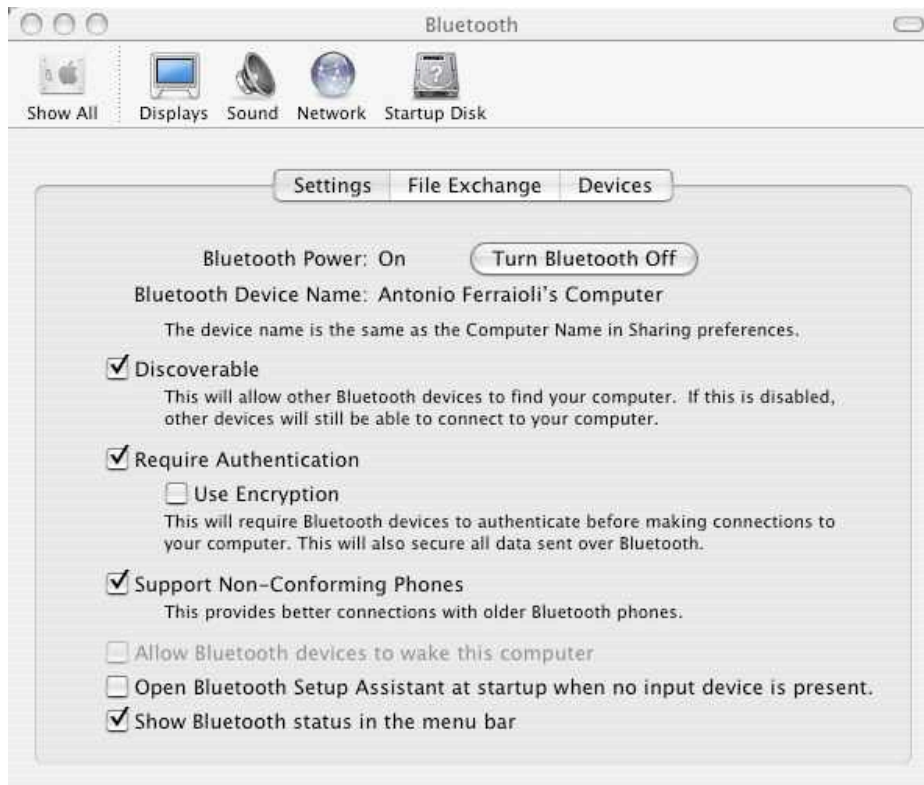
- light on your mobile
- verify that Bluetooth is activated on your mobile
- your mobile needs to be near your mac (about 10 meters around)

Your Mac Configuration:

- insert your bluetooth adapter into an USB port (if you need an adapter, some users have bluetooth already integrated in their mac)

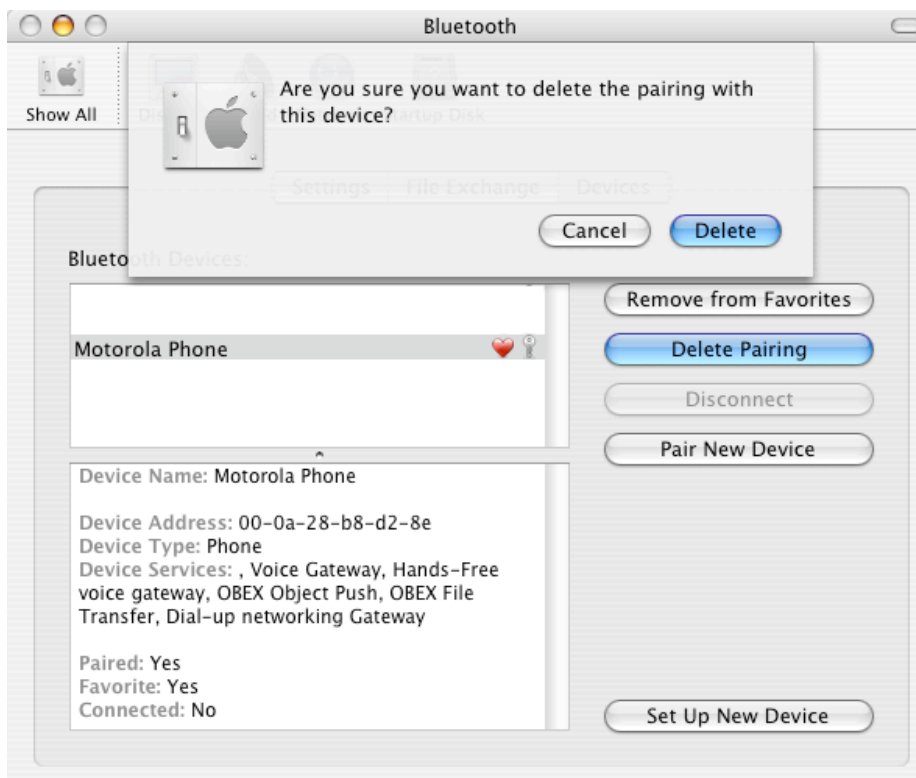
- Bluetooth Preferences Pane - Settings tab configuration - Step 1

- . open your bluetooth preference pane and configure it as shown (probably you dont need to configure it exactly as in the picture, the following is my working configuration, start with this one and if it works you can try different ones)



- Bluetooth Preferences Pane - Devices tab configuration - Step 2

if you already tried to configure your mobile before reading this tutorial you can decide to start from scratch. In that case remove your mobile from the Bluetooth Device list under the Devices tab of the Bluetooth Preferences Pane



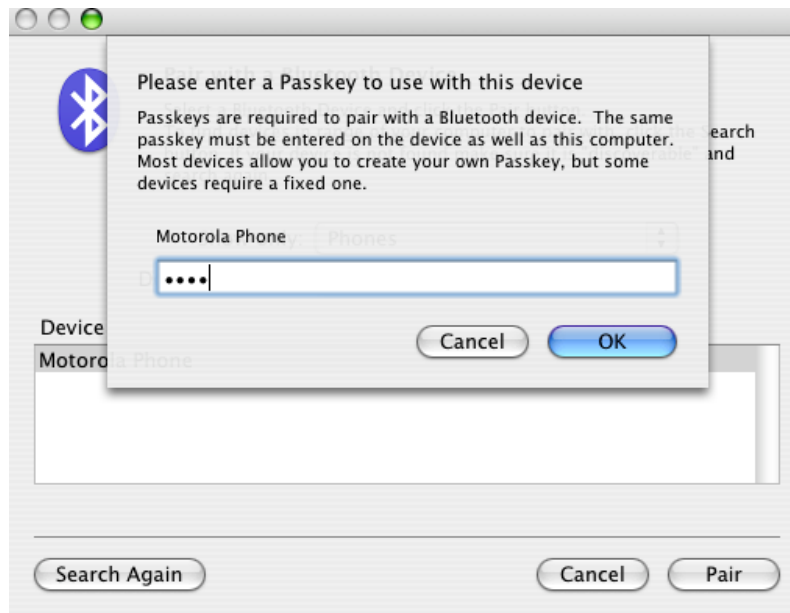
- select your mobile from the Bluetooth Device List (under the Devices Pane of the Bluetooth Preference Pane)
- press the "Delete Pairing" button
- press the "Delete" Button that appears on the showed alert sheet (see previous picture)

- Bluetooth Preferences Pane - Devices tab configuration - Step 3

- . your mobile model does not appear in the device list
- . press the "Pair New Device" button
- . the following panel will appear, and after a scan your mobile should appear in the list

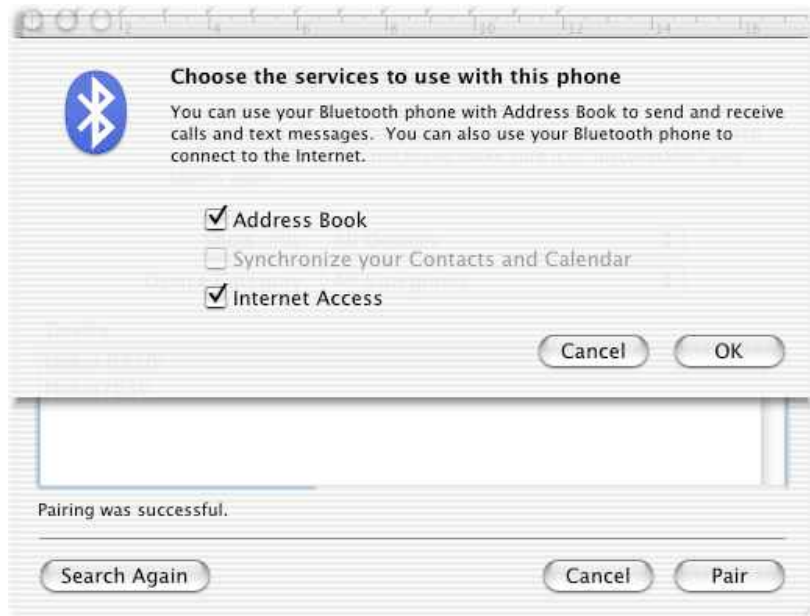


- . select your mobile and press the pair button
- . now you will be asked to enter a passkey that your mobile will ask you during the first connection

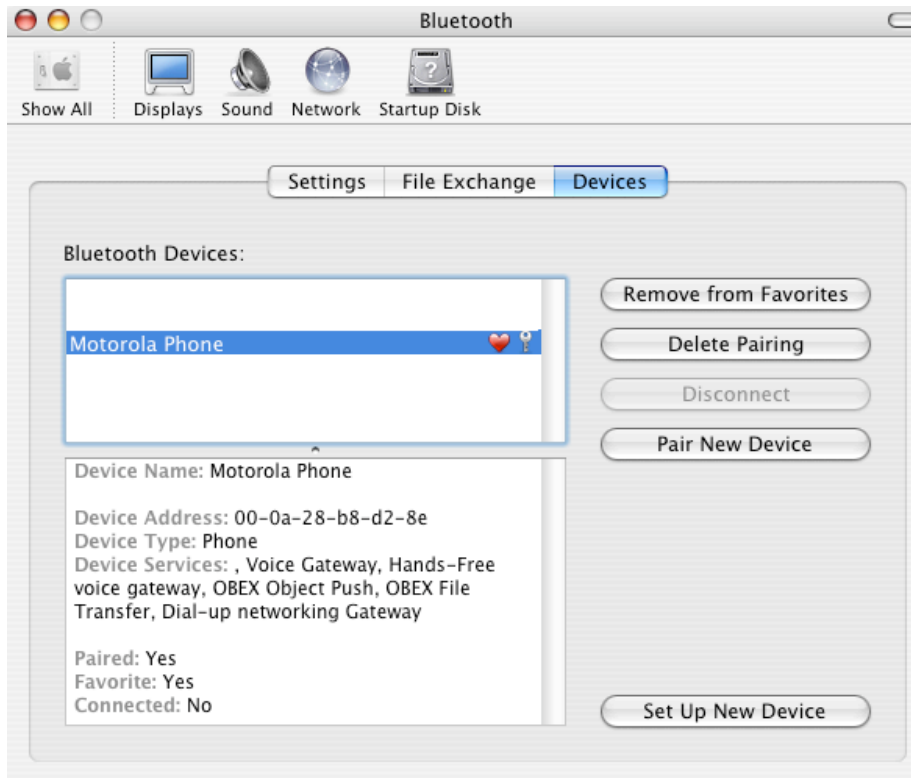


- . insert a passkey and then press OK
- . now your mac is waiting that you accept the connection from your mobile keyboard
- . so go to your mobile, it will be asking you to accept the connection to your computer
- . accept the connection
- . your mobile will ask you for the passkey you entered previously
- . **(this step is valid only for some mobile models)** now go back to your mac, it will be asking you to select some services. For OnSync is not important how you configure this, my configuration is the following

(for Jaguar only)



. now your mac is paired with your mobile, here is how it appears my Bluetooth Preference pane under the Devices tab




This last picture will be quite different depending on your mobile phone. Your Bluetooth mobile phone supports some "Device Services". Among those services it should be present one that lets you communicate to your mobile using serial communication. This service will be used by OnSync to communicate to your mobile. The "Serial Device Service" has different names depending on the mobile brand and model you are using. In the following table are showed some possible "Serial Service Name" you will see for different mobile brands:

Brand	Service Name (Serial)
Motorola	Dial-up networking Gateway
Nokia	COM1
Sony Ericsson	Serial Port1, Serial Port2
Siemens	Serial Port

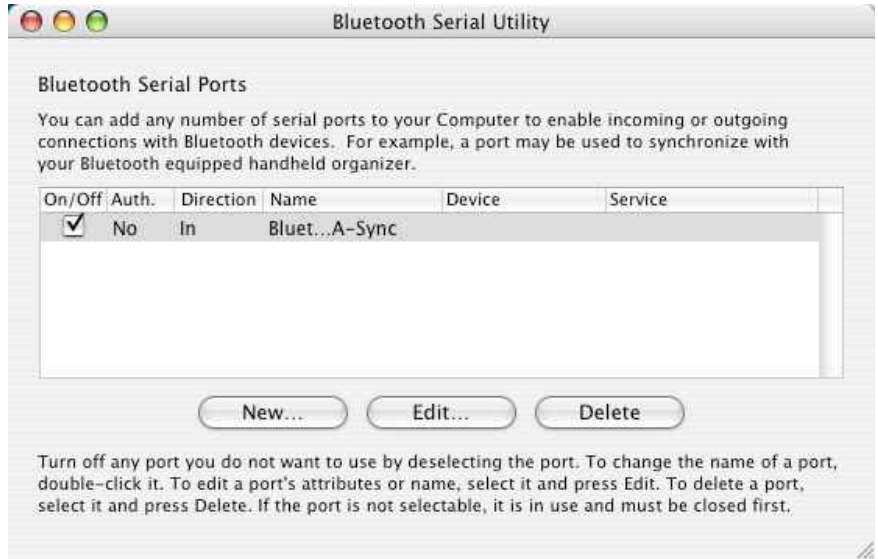
this table is not exhaustive, if you have different Serial Services listed send me your configuration to onsync@onmadesoft.com so I'll modify this tutorial.

- Bluetooth Serial Utility Configuration - Step 4

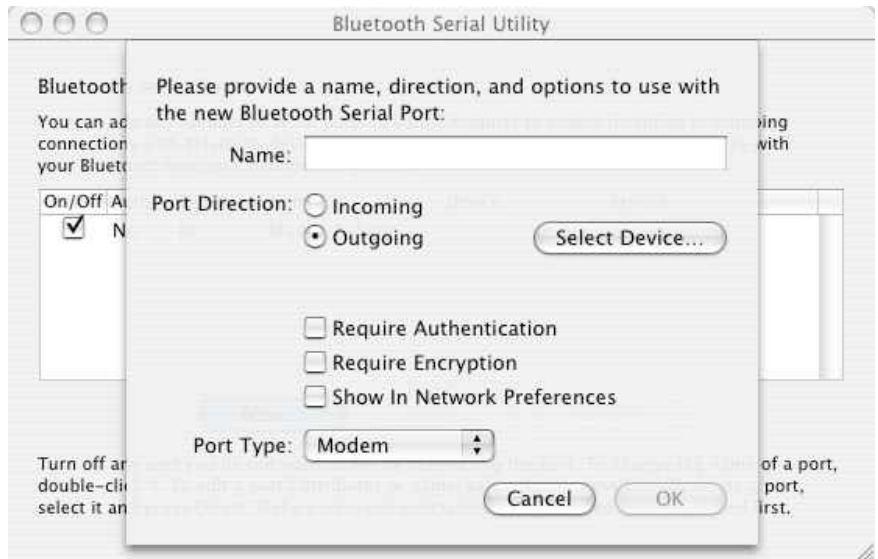
- go to your Application folder and from here open the Utilities folder

- here you'll find an application named "**Bluetooth Serial Utility**" 

- start this application and the following window will appear



- now you will create a new serial port for your mobile. Press the "New..." button



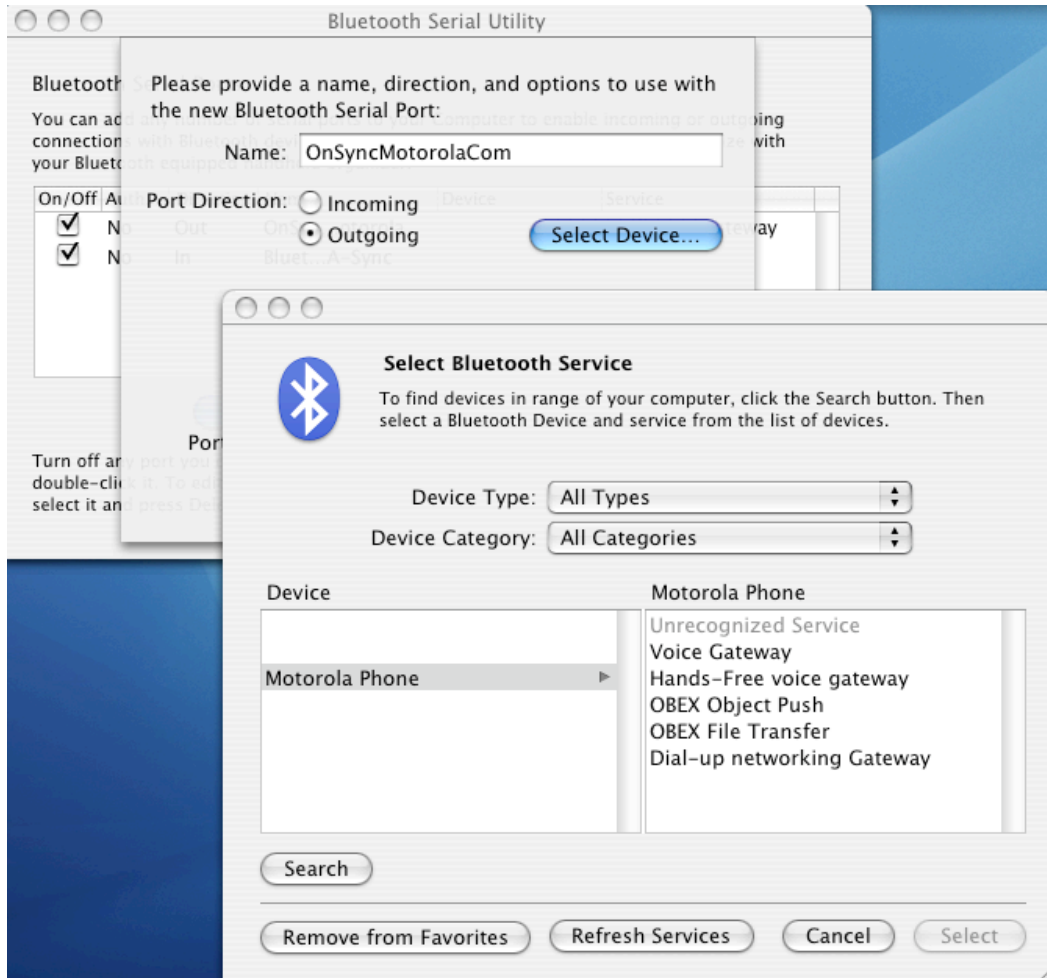
- decide which name you will give to your new serial port (for Nokia mobiles I created OnSyncNokiaCom, for Motorola models OnSyncMotorolaCom. You are completely free to decide the name you prefer)
- then press the "Select Device..." button
 - . a new window will be opened
 - . select your mobile from the left list (**Device**)
 - . the right list (**Motorola Phone in the picture**) will be populated with the services on the mobile
 - . select a Service that let you establish a serial communication to your mobile (see the following table)

Brand	Service Name (Serial)
Motorola	Dial-up networking Gateway

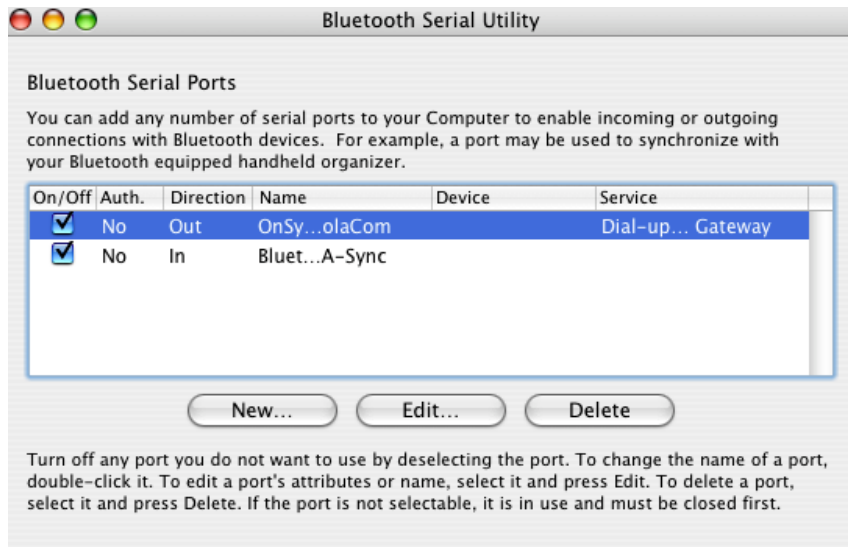
Nokia	COM1
Sony Ericsson	Serial Port1, Serial Port2
Siemens	Serial Port

this table is not exhaustive, if you have different Serial Services listed send me your configuration to onsync@onmadesoft.com so I'll modify this tutorial.

. for example if you are using Motorola mobile select "Dial-up networking Gateway" from the list of showed services,



- press the "Select" button on the previous window and then the "Ok" button
- now you have a new serial device configured for your mac
you will use later this serial device to configure OnSync



OnSync Configuration:

- open OnSync and go to the Preferences -> Mobile Device
- configure the Mobile Type corresponding to the mobile device you are using (in the example Motorola Phone)
- configure the Serial Device you just created at the preceding step (in the example /dev/cu.OnSyncMotorola)
- configure a baud rate (usually 19200 works, usually higher (and faster) values works for Bluetooth devices too)
- press the "Test Connection" button to see if OnSync arrives to communicate with your mobile
- let me know if this works for you too (onsync@onmadesoft.com)

